



10. TOOLS & VARIOUS

MISCELLANEOUS TOOLS



18214Y
Wedge lever A.S., beech, width 70 mm



18215Z
Wedge lever A.S., plastic, width 65 mm
Wedge lever, plastic, width 65 mm



18222H
Paddle x 1 - Deep use RELDA paddle for application of silicon sealant. Green - deep use



18223J
Paddle x 25 - Occasional use RELDA paddle for application of silicon sealant. Black - occasional use



18650X
Adjustable wedges set of 4 wedges adler selection load capacity 100 kg/wedge Load capacity : 100 kg/pcs Joint width : 2 - 50 mm Material: Fiber reinforced material Content : 4 Winbag with belthook



18515A
Cushions for wedging x 5
wedging cushions for desks and carriages when transporting glass volumes.
Warning : Colours and texture may vary from batch to batch.



18001S
Gun for glazing
POINTIX glazing gun,
universal cylinder, for 10 to 11 mm
diamond or triangular tacks.



18009A
Tacks, diamond, box of 4 000 box of 4 000 (2 boxes of 2000 each) POINTIX tacks. Diamond



18011C
Tacks, triangular, 4 000 box of 4 000 (4 boxes of 2000 each) POINTIX tacks. Triangular



18333C
Pachometre bi-pachometre RELDA, for measuring the thickness of: - glass in rebate from 2 to 15 mm, - airspace between double glazing from 6 to 24 mm also available under blister "Kit Adler" 825 18U



18360H

Merlin Lazer, thickness gauge “Merlin Lazer” portable instrument for easy and non-destructive measurement of thicknesses of rebated glass, glass and air gaps in double or triple glazing, double-layer and multi-layer glass panels. The instrument operates on a principle similar to that used by the pachometer (Réf.18333C) but readings are much easier and much more accurate, as the refracted and reflected light source is actually a laser beam. For glass thicknesses up to 65 mm and air gaps up to 38 mm. Two other gauges can be used to complete identification of a glass panel and: (1) indicate whether a glass panel (or each of the panels in a double glazed panel) is toughened or otherwise - (2) detect whether a glass panel (or one of the glass panels in a double glazing assembly) is coated with a low emissivity coating.



18364M

Merlin Lazer, complete set of Merlin Lazer apparatus Complete set of Merlin Lazer apparatus containing : 18360H, 18361J, 18362K

- **18360H** Merlin Lazer
- **18361J** Toughened glass indicator
- **18352K** Low E coating detector



18501L

carrier for glass, reinforced leather , length 0.90m
Total length (including handles) 0.90 m without bead

18502M

carrier for glass, reinforced leather , length 1.10m
Total length (including handles) 1.10 m without bead



18514Z

carrier for glass, reinforced leather, length 1.10m
Total length (including handles) 1.08 m without bead



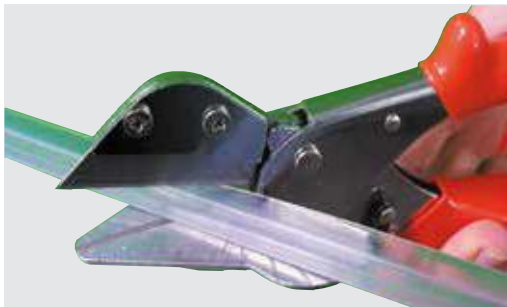
18517C

carrier for glass, reinforced leather with bead, length 0.90m
Total length (including handles) 0.90 m with bead

18518D

carrier for glass, reinforced leather with bead, length 1.10m
Total length (including handles) 1.10 m with bead

MISCELLANEOUS TOOLS

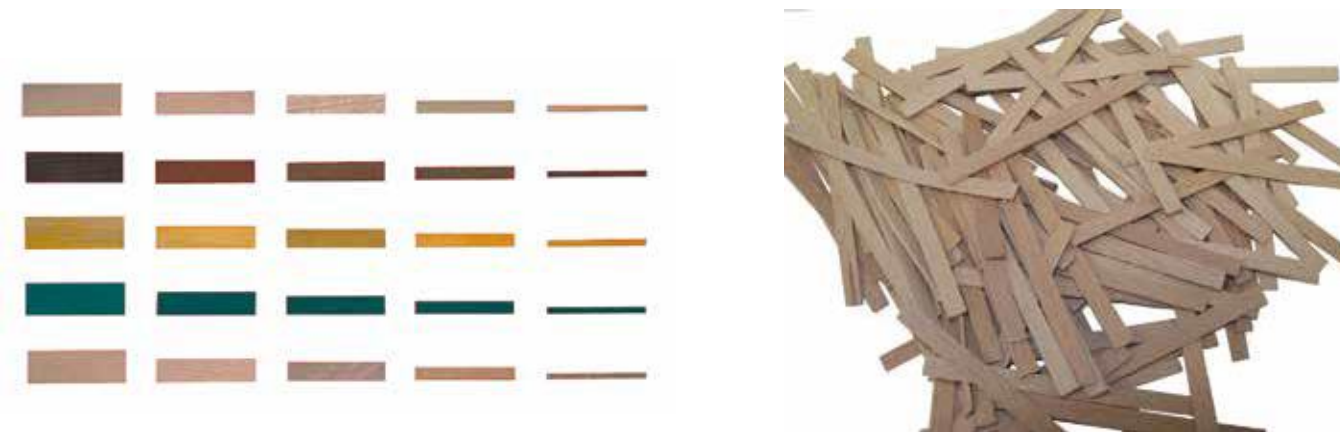


80518V

Mitring seal cutter

The kit offers a very precise and safe mitring cutter for easy trimming of waterproofing profiles. This cutter will prove an essential tool for repeated shower cubicle installations whenever it is necessary to adapt the length of the standard profiles to the actual dimensions of the installation.

WOOD WEDGES



rolled hardwood wedges, treated with fungicide, impregnated with linseed oil and coloured as per thickness, compliant with DTU 39 (glazing), length 70 mm, in bag of 1000 identical wedges.

	width (mm) thickness :	5	10	15	18	25
1 x 1000	1 mm (natural)	380 30N	380 31P	380 32Q	380 34S	380 33R
1 x 1000	2 mm (green)	380 35T	380 36U	380 37V	380 39X	380 38W
1 x 1000	3 mm (yellow)	380 40Y	380 41Z	380 42A	380 44C	380 43B
1 x 1000	4 mm (brown)	380 50K	380 51L	380 52M	380 53N	380 54P
1 x 1000	5 mm (natural)	380 45D	380 46F	380 47G	380 49J	380 48H



22430G

belt machine "Mini-Diam V2"

"Mini-Diam V2" diamond belt machine for beveling and edgeworking glass sheets. Uses diamond (or abrasive) and cork belts of 65 x 482 mm. Roller rotation speed: 2800 rpm. 2-position honeycombed expandable rubber roller. Bearing rail: 81 cm with 14 grey rubber covered runners \varnothing 50 mm; optional 2nd rail. Belt tensioned by roller expansion due to centrifugal force. Watering jet fed from water supply or pressurised tank; connection via plastic tube with internal \varnothing 8 mm. 50 Hz motor, IP55 protection, 220V single phase. Power: 0.37 kW. Noise level: 70 dbA. Rotating switch operation. CE marking. Size: h: 39 cm; w: 81 cm; d: 54 cm; weight: 46 kg. Supplied with 1 cork polishing belt (abrasive and polishing belts, see 145, 150, 151, 152). 2 years warranty for normal use.



Associated items list

14526Q	Diamond belt 65 x 482 mm, for mini-Diam, upper grade, microns 30
14580Y	Diamond belt 65 x 482 mm, for mini-Diam, standard grade, microns 125
14581Z	Diamond belt 65 x 482 mm, for mini-Diam, standard grade, microns 74
14583B	Diamond belt 65 x 482 mm, for mini-Diam, standard grade, microns 30
14520B	Abrasive belt R445, 65 x 482 mm, G180 (x1)
15021C	Abrasive belt R445, 65 x 482 mm, G80 (x1)
15023F	Abrasive belt R445, 65 x 482 mm, G180 (x1)
15209H	Abrasive belt R445, 65 x 482 mm, G180 (x1)
15210J	Abrasive belt, Norton Durite R445, for wet working, 65 x 482 mm, G 80 (Mini-Diam) (x20)
15211K	Abrasive belt, Norton Durite R445, for wet working, 65 x 482 mm, G 120 (Mini-Diam) (x20)
15212L	Abrasive belt, Norton Durite belt R445, for wet working, 65 x 482 mm, G180 (Mini-Diam) (x20)
15213M	Abrasive belt, Norton Durite R445, for wet working, 65 x 482 mm, G 220 (Mini-Diam) (x20)
15205M	Abrasive belt (A.S.) for dry working, 65 x 482 mm, G120 (x20)

**20532T**

Bench 90 x 190 cm, open worktop
RELDA bench for using portable machines. Open worktop
90 x 190 cm. 1 mobile bar. Mounted on folding legs.
Workshop bench, easily transportable on the site. Locking
system on all 4 wheels.
Maximum load limit : 100 kg

**20533U**

Tarpaulin for cutting table
RELDA tarpaulin for recovering watering liquid from portable diamond-tipped
tool machines. Dimensions: 165 x 90 cm. Fitted with drain strip. Supplied with
4 threaded rods and 4 nuts for mounting on worktable 205 32T.

**21735A**

Wagon, 350 kg
workshop wagon with 44 grooves, PVC (10 x 10 mm); 4 wheels, 2 of them
swivelling. Useful depth: 75 cm - Height (without base): 83 cm - Width: 90
cm (internal). Load: 350 kg

**SPECIALY SHARPENED DRILL FOR DRILLING GLASS
ANGLE 30°, DIAMETER : Ø MM**



Diameter mm	designation
4	13804F
5	13805G
6	13806H
7	13807J
8	13808K
9	13809L
10	13810M
11	13811N
12	13812P
14	13814R

**SHARPENED DRILL FOR GLASS DRILLING AND REAMING
SPECIALY SHARPENED DRILL FOR DRILLING GLASS
ANGLE 30°, DIAMETER : Ø MM**



Diameter mm	designation
16	13836Q
24	13844Y

**CONICAL GLASS REAMER, CYLINDRICAL SHANK
BETWEEN DIAMETERS d AND D mm**



Diameter mm	designation
18 to 30	13881P

**LONG-SHANKED BIT FOR WORKING MARBRE AND SIMILAR METERIALS
ANGLES 30°, CYLINDRICAL SHANK, LENGTH 90 MM, DIAMETER : Ø MM**



Diameter mm	designation
6	13866X
8	13868Z
10	13870B

Attention : for vertical handling please divide the load mass by 2.

Items of product group 184 are not lifting equipment but manual accessories : they must by no means be implemented between a machine and an element to be lifted. They must be used under human traction directly as handles.

They are excluded from the rules and regulation of EC which apply to machines and equipment (reference 98/37/EC). As such they do not need to carry the EC stamping.

Please refer to our catalogue to know about maximum loading weight and how to define these values. In case of vertical glass carriage, indicative value for maximum weight has to be divided by 50%.



SUCTION CUP LIFTERS SQUEEZED CUPS



18423A

suction cup lifter, 2 cups "FUTURA®"

Two cups, release by pushing knob (ADLER S.A. Patent); frame in A.B.S., cups in polyurethan (oil resistant); handle specially designed to facilitate horizontal and vertical transport, load 55 kg, dia. 85 mm, weight 450 g Attention: for vertical handling please divide the load mass by 2.



18426D

suction cup lifter, 1 cup "FUTURA®"

One cup in polyurethan (oil resistant); cast aluminium handle, load 35 kg, dia. 85 mm, weight 75 g Attention: for vertical handling please divide the load mass by 2.

SUCTION CUP LIFTERS LEVERED CUPS



18400A

suction cup lifter, 2 cups, antishock plastic body

"RELDA® - suction cup lifter, antishock plastic body, 2 cups, rubber cup with lever. diam. 120 mm load : 80 kg weight : 575 g



18403D

Suction cup lifter with double swivel heads, antishock plastic body

RELDA® suction cup lifter, antishock plastic body, 2 cups rubber cup with lever diam. 120 mm. load : 70 kg, with double swivel heads This lifter fits particularly to curved surfaces, e.g. car windows mini curvature radius : 600 mm weight : 660 g



18414R

vacuum, Hand-held plastic vacuum cup

Hand-held vacuum cup lifter. Handle specially designed for one-hand use. Suitable to all smooth and non-porous surfaces. Suction cup Ø: 120 mm. Max. load: 40 kg. Ideal for horizontal handling of glass on a table or conveyor

PUMP ACTION SUCTION LIFTERS



18401B

Suction cup lifter "Pow'r Grip" Ø 200, metal handle and frame
Pow'r Grip suction lifter, 1 cup, pump action. The vacuum pump, in the handle, is activated by repeatedly pressing the piston. The suction lifter is released by mean of a vacuum breaker valve. Load 100 kg (with safety factor of 1.7), weight 1.7 kg, metal handle nd frame, rubber sole ø 200 mm
Conditions of use : Suction cups lifters are hand tools , destined to lift a load under a human action only .They are not , therefore , submitted to the CE mark . The succion lifter's tear off force (load) is determined , in our catalogue , for : - a traction perpendicular to the surface of the glass panels or plates (handled horizontally) , - for smooth , nonporous and clean surfaces , - succion cups in perfect condition . Attention: for vertical handling please divide the load mass by 2.



18402C

Suction cup lifter Pow'r Grip Ø 200, Lexan handle and frame
Pow'r Grip suction lifter, 1 cup, pump action. The vacuum pump, in the handle, is activated by repeatedly pressing the piston. The suction lifter is released by mean of a vacuum breaker valve. Load 100 kg (with safety factor of 1.7), weight 0.8 kg, ABS handle and frame, rubber sole ø 200 mm
Attention: for vertical handling please divide the load mass by 2



18417U

Suction cup lifter "Pow'r Grip" Ø 254, for dished surface
Pow'r Grip suction lifter, 1 cup, pump action. The vacuum pump, in the handle, is activated by repeatedly pressing the piston. The suction lifter is released by mean of a vacuum breaker valve. Load 140 kg (with safety factor of 1.7), weight 2.3 kg, metal handle and frame, rubber sole ø 254 mm, for dished surfaces (not recommended for thickness £ 3 mm), min. Radius 330 mm
Attention: for vertical handling please divide the load mass by 2



18452H

vacuum cup "Pow'r Grip", Ø153
Vacuum cup POWR GRIP with durable metal handle. Rubber sole : 153 mm. Ideal design for quick attachment on curved or flat surfaces, e.g. windscreen. Red-line indicator warns user of any vacuum loss. Lift tabs on vacuum pad edges permit instant release. Minimum radius for curved surface: 305 mm. Load capacity: 65 kg (with safety factor of 1,7). Supplied with vacuum pad protector.
Attention: for vertical handling please divide the load mass by 2
Edge stopper for UV gluing and partition assembling



18604X

compas de montage réglable 190mm x 190mm
Compas de montage pour collage UV 190mm x190mm avec 2 ventouses Ø100mm. Permet de maintenir 2 volumes de verre avec un angle ajustable entre 45° et 315° l'un par rapport à l'autre pendant le collage. Réglage fin en position dans les 2 directions ± 10mm

GLASS CUTTERS WITH TUNGSTEN CARBIDE WHEEL

11412F

glass cutter Vitrom wooden handle 135° carbide (x1)
Vitrom® glass cutter usual shape, wooden handle
Glass thickness : 3-6mm



11403V

glass cutter Vitrom wooden handle 135° carbide (x12)
Vitrom® glass cutter usual shape, wooden handle
Glass thickness : 3-6mm



12001V

Spare wheel / cutting angle 135° for standard float glass (x1)
VITROM tungsten carbide cutting wheel, dia. 5 mm, angle 135°
Flat glass thickness : 3-6mm



11475Y

Glass cutter Vitrom®, special professional cutter (x1)
Vitrom® glass cutter, special professional cutter, with felt, wooden handle, metal mounting, removable barrel with carbide wheel 120 01V (angle 135°).
Glass thickness : 3-6mm



11476Z

Glass cutter Vitrom®- special "PYROCERAM" (x1)
special "PYROCERAM" Vitrom® with felt, wooden handle, VITRUM P 124 03H carbide wheel
Glass thickness : 3-6mm



12403H

Cutting wheel Vitrom® P "PYROCERAM" (x1)
Vitrom® P cutting wheel, on board, outer diameter 5 mm, thickness 1.15 mm. Borehole provided for an axle \varnothing 1.5 mm.
Flat glass thickness : 3-6mm

SPARE WHEELS DEPENDING ON GLASS THICKNESS**12328A**

Cutting wheel Vitrum®, 114° (x1)
Vitrum® cutting wheel, 114°, on board, outer diameter 5 mm, thickness 1.15 mm.
Borehole provided for an axle of \varnothing 1.5 mm
Glass thickness : 1-2mm

12346V

Cutting wheel Vitrum®, 118° (x1)
Vitrum® cutting wheel, 118°, on board, outer diameter 5 mm, thickness 1.15 mm.
Borehole provided for an axle of \varnothing 1.5 mm.
Glass thickness : 1-3mm

12387Q

Cutting wheel, Vitrum® 130° (x1)
Vitrum® cutting wheel, 130°, on board, outer diameter 5 mm, thickness 1.15 mm.
Borehole provided for an axle of \varnothing 1.5 mm.
Glass thickness : 2-4mm

12447F

Cutting wheel Vitrum® 145° (x1)
Vitrum® cutting wheel, 145°, on board, outer diameter 5 mm, thickness 1.15 mm.
Borehole provided for an axle of \varnothing 1.5 mm.
Glass thickness : 4-7mm

12478P

cutting wheel Vitrum® 155° x 1
Vitrum® cutting wheel, 155°, on board, outer diameter 5 mm, thickness 1.15 mm.
Borehole provided for an axle of \varnothing 1.5 mm
Glass thickness : 6-7mm

GLUE, TWO-SIDED TAPES, POLYURETHAN FOAM, ACRYLIC ADHESIVE TAPE



36040Z

Glue, CPM 801, 310 ml cartridge
CPM 801 elastomer-based glue for mirrors. Does not attack varnish (industrial type) or silver coating. High damp resistance. Shear strength: 50 kg per cm², pull out strength: 10 kg per cm². Temperature resistance from -15° C to +70° C. Box containing 12 cartridge (130 boxes on a paddle). 310 ml cartridge.



37218F

Glue, CPM 801, 310 ml cartridge
CPM 801 elastomer-based glue for mirrors. Does not attack varnish (industrial type) or silver coating. High damp resistance. Shear strength: 50 kg per cm², pull out strength: 10 kg per cm². Temperature resistance from -15° C to +70° C. Box containing 12 cartridge (130 boxes on a paddle). 310 ml cartridge.



37228R

Silicon elastomer mastic, black, "MS 107", BOSTIK
MS Polymer based bonding compound.
Odourless, solvent and isocyanate free, these sealants crosslink about 1.5 times faster than silicon in contact with atmospheric moisture to form a flexible joint.
Specially intended for bonding or sealing materials between themselves or on other supports such as aluminium, stainless or galvanized steel, zinc, copper, brass, metal, glass, PVC, polyester, and wood, ...except for untreated polyethylene, polypropylene and Teflon; does not corrode metals. Excellent adhesion without primer, including on moist supports (non-saturated and non-dripping). Very good resistance to weathering and UV radiation. Compatible with most paints and can be painted after full cure.
The resistance values are provided as a guide. A preliminary test is always recommended.

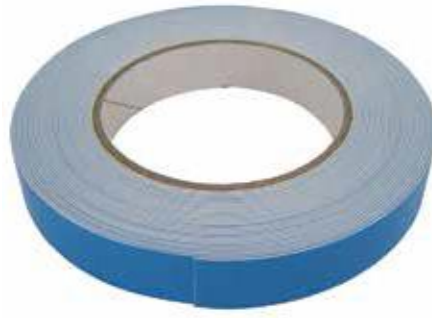


39009B

Adhesive foam V 2800, 2-sided polyurethan, 10 m x 0,8 mm
V 2800 2-sided polyurethan closed cell foam, acrylic adhesive, for internal or external use.
Width: 19 mm, thickness: 0.8 mm,
length 10 m

390010C

Adhesive foam V2800, 2-sided polyurethan, 10m x 1,6
V 2800 2-sided polyurethan closed cell foam, acrylic adhesive, for internal or external use.
Width: 19 mm, thickness: 1.6 mm, length 10 m



39007Z

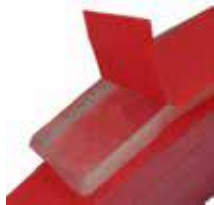
Adhesive foam V 1300, 2-sided polyurethan, 10 m x 0,8 mm
V 1300 2-sided polyurethan adhesive foam, for internal use, white.
Width: 19 mm,
thickness: 0.8 mm, length: 10 m

39001T

adhesive foam V 1300, 2-sided, polyurethan, 61 m x 0,8 mm
V 1300 2-sided polyurethan adhesive foam, for internal use, white.
Width: 19 mm,
thickness: 0.8 mm, length: 61m

39002U

adhesive foam V 1300, 2-sided, 61 m x 1,6 mm
V 1300 2-sided polyurethan adhesive foam, for internal use, white.
Width: 19 mm,
thickness: 1.6 mm, length: 61 m



39020P

Acrylic adhesive tape, 16,5 m x 5 mm x thick. 2mm
Adhesive, ideal to fix stationary glass panels 6 to 10 mm thick. For shower cabins or bath.
Thickness 2 mm - width 5 mm - length 16,5 m



39091R

Metal primer 3M P592, 250 ml
3M Metal Primer P592 is a colorless polysilane primer designed to improve the adhesion of 3M polyurethane sealants on difficult surfaces, especially on raw or anodized aluminium, or on galvanized steel, PVC, glass
Promotes adhesion
Clear formulation
Transportation and marine
Sealing, bonding, windows, windshields, windscreens, glass

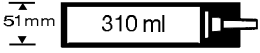


39090Q

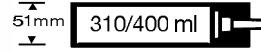
3M Tape Primer 94, 950 ml
3M Tape Primer 94 boosts adhesion of adhesive tapes, plastics, wood surfaces, concrete, metal...



7:1



12:1



C200 Easiflow HD

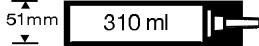
Metal frame / Corps métallique
 Cartridges /Cartouches 310 -400 ml
 Standard squirting stop system / Système anti-coulage standard

C240 Powerflow cartridge

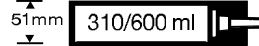
Heavy semi- professional metal housing
 Corps métallique solide semi-professionnel
 Cartridges 310 - 400 ml
 Standard squirting stop system
 Système anti-coulage standard



18:1



18:1



C250 Powerflow combi cartridge

Heavy closed aluminum tubular housing for cartridges 310ml
 Corps métallique solide fermé pour cartouches 310 ml
 Standard squirting stop system
 Avec système anti-coulage

C270 Powerflow combi sachets

Heavy closed aluminum tubular housing for cartridges 310ml - 600ml
 Corps métallique solide fermé
 Pour sachets 310 ml jusqu'à 600 ml
 Standard squirting stop system
 Avec système anti-coulage

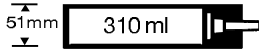
on demand / sur demande Clear Barrels



Pressure Relief Device (PRD)

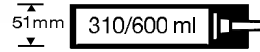
Système anti-coulage





C330 Airflow 2 cartridge

Pneumatic professional version
for cartridges 310ml
1.45 kN – 6.8 bar
Pistolet pneumatique professionnel
Pour cartouches 310ml
1.45 kN – 6.8 bar



C320 Airflow 2 sachets 600 ml

Pneumatic professional version
for sachets 600ml
1.45 kN – 6.8 bar
Pistolet pneumatique professionnel
Pour sachets 600ml
1.45kN-6.8 bar

AIRFLOW 2					
CARTRIDGE	1.1-1.2kN / 6.8bar	730g	310ml	310ml	N/A
		810g	400ml	400ml	N/A
SACHET	1.45kN / 6.8bar	950g	310ml	N/A	310ml
		990g	400ml	N/A	400ml
		1120g	600ml	N/A	600ml
COMBI	1.45kN / 6.8bar	1300g	310ml	310ml	310ml
		1390g	400ml	400ml	400ml
		1640g	600ml	N/A	600ml
QUART	1.4kN / 6.8bar	1850g	N/A	946ml	N/A



C150M Solo clamp 150 metal



C150P Solo clamp 150 nylon

Panasonic



51mm
310 ml

EY 3640 LZ1S



51mm
310/600 ml

EY 3641 LZ1S

TYPE	EY 3640 LZ1S	EY 3641 LZ1S
Voltage - Tension	14,4 V	14,4 V
Capacity (technology) - Capacité (technologie)	3,1 Ah (Li-ion)	3,1 Ah (Li-ion)
Charging time (full load) - Durée de chargement (charge pleine)	40 / 60 min.	40 / 60 min.
Dimensions (w x l x h) Dimensions (l x h x p)	140 x 424 x 238 mm	140 x 560 x 238 mm
Weight (incl. battery) Poids (avec accumulateur)	2,6 kg	2,75 kg
Standard Accessories (battery / charger / box)	1 x accu EY 9L41 B	1 x accu EY 9L41 B
Accessoires standards (accumulateur / chargeur / coffret)	EY 0L80 B	EY 0L80 B



51mm
310/600 ml

EY 3654 NQW

TYPE	EY 3654 NQW
Voltage - Tension	7,2 V
Capacity (technology) - Capacité (technologie)	2,8 Ah (Ni-Mh)
Charging time (full load) - Durée de chargement (charge pleine)	30 min.
Dimensions (w x l x h) Dimensions (l x h x p)	106 x 550 x 227 mm
Weight (incl. battery) Poids (avec accumulateur)	2,0 kg
Standard Accessories (battery / charger / box)	2 x accu EY 9268 B
Accessoires standards (accumulateur / chargeur / coffret)	EY 0110 B

BASE KIT

TOUGH TOOL IP™



EVERY BOX CONTAINS:

- 1 pc Tanos T-Loc systainer®
- 1 pc EY 74A1 Cordless Drill & Driver (Black) (18V / 14.4V, 1.95kg, Max. 42Nm)
- 1 pc light EY 37C2 B
- 1 pc bitset TOOLBS1
- 3 pc 18 V/4,2 Ah batteries EY 9L51 B
- 1 pc charger EY 0L82 B
- 1 pc machine at your choice from box 1 t/m 3

Chaque box de 18 Volt contient :

- 1 pce Tanos T-loc systainer
- 1 pce EY74A1X perceuse visseuse (edition noir)
- 1 pce lampe EY37C2B
- 1 pce boite d' embouts TOOLBS1
- 3 pcs 18V/4.2 Ah batteries EY9L51B
- 1 pce chargeur EY0L82B
- 1 pce machine à choisir

BOX 1 + EY 75A1 X BLACK EDITION

Cordless Impact Driver

- Light weight 1,65 kg
- 1/4"-quick bit chuck
- Brushless motor
- Electronic speed control
- Electric brake
- Belt hook
- LED light



Visseuse ergo avec embout à six pans creux 1/4"

- Poids faible de 1.65 kg
- Embout à six pans creux 1/4"
- Moteur sans balai et commutateur électronique
- Stabilisation électronique de la vitesse
- Frein d'inertie électronique
- Porte ceinture et témoins lumineux DEL

BOX 2 + EY 78A1 X (BLACK)

Cordless Rotary Hammer Drill & Driver

- Light weight 2.6kg
- Dual function: Rotary Hammer or Drill & Driver
- Drill chuck SDS-plus
- Variable slow start for precise drilling
- Electric speed control / Electric brake
- Bit adapter



Marteau perforateur

- Poids faible de 2.6 kg
- Fonction perceuse à percussion et commutateur à démarrage rapide
- Adaptateur de burin sds-plus en équipement standard

BOX 3 + EY 46A2 X

Cordless Angle Grinder

- Light weight 2.35kg
- Speed at no load 10.000 min-1 (rpm)
- For 125mm discs
- Spindle lock for easy disc changes
- Separating, cutting and grinding
- Re-start functionslijpen; Re-start-functie



Meuleuse d'angle

- Poids faible de 2.35 kg
- Pour disques de 125 mm
- Vitesse sans charge de 10 000 tr/min
- Arrêt de démarrage pour le changement de batterie
- Fonction de redémarrage